

ARKILIFE AVAO AA301, AA401, AA501, AAKV101 BASIN MIXER

ARKILIFE®
COPENHAGEN

INSTALLATION MANUAL



CAUTION: WEAR GLOVES



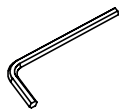
Tools needed:



Wrench



Cross screwdriver

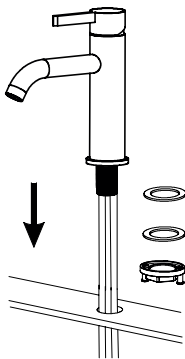


Hex key



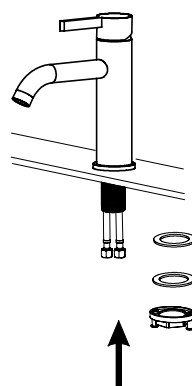
Tape

1



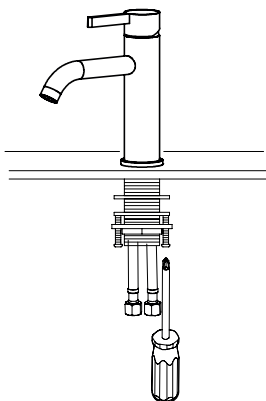
As shown in the figures,
demount nut and gaskets,
put flexible hoses into the hole.

2

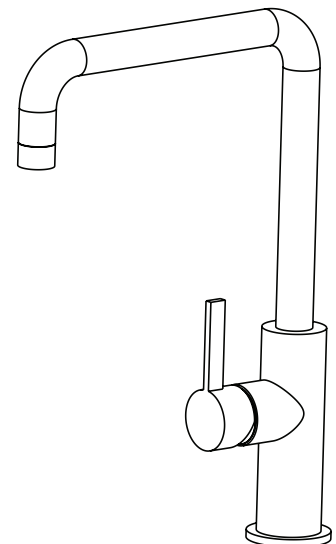
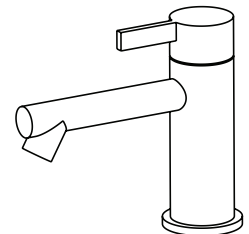
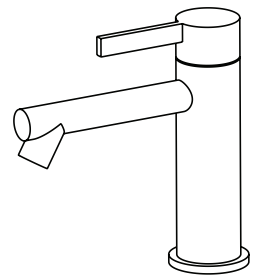
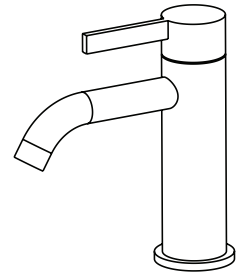


Put the rubber gasket, steel
gasket and the nut onto hoses
in sequence.

3



Tighten the screws
by cross screwdriver.



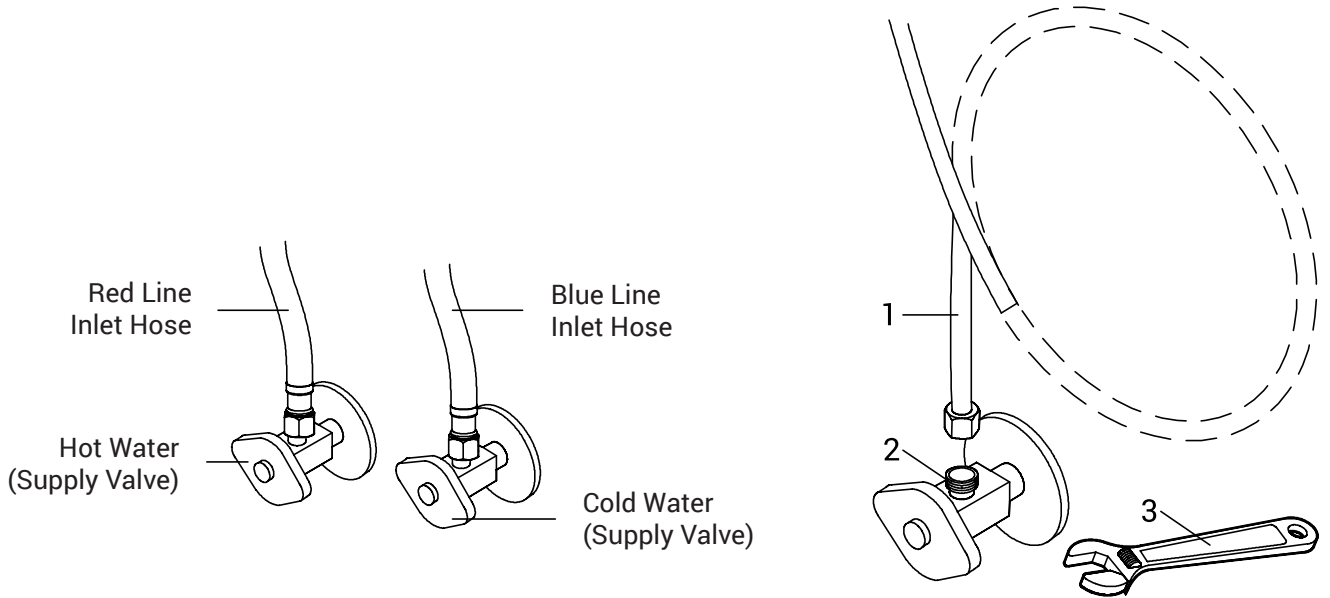


NOTICE:

To avoid the risk of property damage, please do strictly comply with instruction manual.

4

Connect flexible hoses with supply valves and screw down by wrench



5

Unscrew the aerator and turn on the water, full power, for one minute with the handle turned to the left side and then turned to the right side, to flush out dirt from the pipes.

